

Asia Education Leader (AEL) Course Summer Course 2025 and Winter Course 2026

ナカサト ローレン
東北大学大学院教育学研究科

The Asia Education Leader (AEL) Course aims to nurture internationally-minded educational professionals (IMEP) able to address educational challenges in contemporary Asia. Specifically, it nurtures (1) Education researchers capable of undertaking a comparative analysis of educational issues in Asia; (2) Education leaders who are practicing educators capable of engaging with researchers, policymakers, and other practitioners; and (3) Education administrators with the knowledge and skills required to collaborate with partners across the region.

Since 2014, the AEL Course has been established and carried out by consensus among partner institutes of universities in Asia. Currently, there are seven institutes participating from six universities, hosting the summer/winter courses in turn. In this, the fifth round of the AEL Course, the Summer Course 2025 (SC2025) was hosted by the Department of Education, Korea University (KU), from August 11-20, and the Winter Course 2026 (WC2026) was hosted jointly by National Taiwan Normal University (NTNU) and National Chengchi University (NCCU) from February 2-11, 2026 and held at Tohoku University in Sendai Japan.

The Summer Course at Korea University hosted 53 student participants from five partner universities and opened three subjects under the AEL Course curriculum framework (Tables 1 and 2 below).

Table 1 SC2025 Subjects Taught

SC2025 (KU)	<u>(A-P) Comparative Education_Issues from International Large-scale Assessments</u> <u>(S-P) Utilization of International Large-scale Assessment Data for Education</u> <u>Research</u> <u>(K-P) Transforming Global Education_Integrating Internationalization and Official</u> <u>Development Aid in Education</u>
----------------	---

Table 2 SC2025 Student Participants

	SC2025
Tohoku University	12
National Chengchi University	10
Nanjing Normal University	20
Korea University	7
National Taiwan Normal University	4
Total	53

In 2025, seven students from Tohoku University, two students from Korea University, two students from National Taiwan Normal University, and seventeen students from Nanjing Normal University completed the AEL Course and received a Certificate of Completion jointly issued by six partner institutions. To date, 107 students have earned a Certificate of Completion.

In addition, in collaboration with AELC partner universities, two online pre-study series sessions were organized for the AEL Summer 2025 and AEL Winter 2026 Courses. As shown in Tables 3 and 4, each pre-study series consists of three sessions which include lectures and discussions about education and social changes in Asia and education and development for a sustainable world. Besides scholars from AELC partner universities, scholars from overseas and domestic partner institutions were also invited to deliver special lectures for AELC students in these sessions.

**Table 3 AEL 2025 Summer Course Pre-study Series:
Examining Educational Trends and Policies in Asia**

No	Date	Speakers	Topics
1	May 30, 2025 (16:30-18:30)	Dr. Hongyang Zhu (Nanjing Normal University)	Phenomenological Exploration of Educational Policy: Unpacking the Lived Experiences of Student Academic Burden
2	June 20, 2025 (16:30-18:30)	Dr. Weiyan Xiong (The Education University of Hong Kong)	Financial Trends in Hong Kong Higher Education
3	July 11, 2025 (16:30-18:30)	Dr. Lauren Nakasato (Tohoku University)	Manifestations of Global Citizenship in Japanese Higher Education Internationalization Policy

**Table 4 AEL 2026 Winter Course Pre-study Series:
Imagining Equitable Educational Futures in Asia**

No	Date	Speakers	Topics
1	November 14, 2025 (16:30-18:30)	Professor Sarah Asada (Kyoritsu Women's University)	From Mobility to Mutuality: Higher Education, Diplomacy, and Forging Futures in Asia
2	December 12, 2025 (17:00-19:00)	Research Professor Hyojin Lee (Korea University)	Promoting Equity and Quality in Education through Technology-Enhanced Learning
3	January 9, 2026 (16:30-18:30)	Associate Professor Dr. Fuangrun Preededilok (Chulalongkorn University)	Building Equitable Educational Futures through Multi-Stakeholder Partnerships

With the conclusion of the fifth round of AELC (2024-2025), we were pleased to host the Asia Education Leader Course (AELC) 2026-2027 Agreement Signing Ceremony to initiate a sixth round of AELC (2026-2027). On February 1, 2026, representatives from each AELC partner institution convened to sign the agreement and celebrate a new phase of collaboration. In addition to Tohoku University, National Chengchi University, Nanjing Normal University, Korea University, and National Taiwan Normal University, the ceremony was also attended by the newest AELC partner, the Chulalongkorn University Faculty of Education. Prior to the Agreement Signing Ceremony, the Chulalongkorn University-Tohoku University Agreement on Academic and Student Exchange Signing Ceremony was held to officially establish the partnership with Chulalongkorn University. Following both signing ceremonies, an AELC Coordinator Meeting was held to reflect on the merits and challenges of AELC and discuss plans for the future of the program.



Chulalongkorn University-Tohoku University Agreement on Academic and Student Exchange
Signing Ceremony



Asia Education Leader Course (AELC) 2026-2027 Agreement Signing Ceremony



Asia Education Leader Course (AELC) Coordinator Meeting 2026

As mentioned above, the Winter Course 2026 (WC2026) was hosted jointly by National Taiwan Normal University (NTNU) and National Chengchi University (NCCU) from February 2-11, 2026 and held at Tohoku University in Sendai Japan. Three subjects were offered (Table 5) and 63 participants from seven partner institutions took part in the course (Table 6).

Table 5 WC2026 Subjects Taught

WC2026	<u>(K-P) Inclusive Education</u>
(NNU)	<u>(A-P) Essentials of Leadership and Group Dynamics</u>
	<u>(S-P) Individual Action in Global Social Change: Global Citizenship Awareness and Youth Solidarity</u>

Table 6 WC2026 Student Participants

	WC2025
Tohoku University	7
National Chengchi University	12
Nanjing Normal University	21
Korea University	9
National Taiwan Normal University	12
Chulalongkorn University	2
Total	63

Moreover, in collaboration with partner institutions, two Asia Education Leader Forums were planned in AY 2025 to enhance exchange and communication between students and faculty members of partner universities. The first forum, the Asia Education Leader Forum 2025 Summer: Education in a Fragmented World: Shaping the Future of Education in Asia-Pacific, was held on October 4, 2025. Forty academic paper and proposal presentations in five topic areas were delivered by participants from Tohoku University, National Chengchi University, Nanjing Normal University and National Taiwan Normal University. Participants shared their research with scholars and other students and received constructive comments and feedback from commentators. The research and discussion aimed to inform future directions for education given the current fragmentation of world affairs and systems. The second forum, entirely student organized and run, will be held on February 22, 2026 on the theme of "Reimagining the Educational Ecosystem for a Sustainable Future." The Forum will be run in a "World Café" format, giving participants opportunities to discuss diverse educational issues with peers.

Looking forward, the 2026 Summer Course will be held jointly by Chulalongkorn University and Tohoku University in Thailand.



AEL 2025 Summer Course: Opening Ceremony



AEL 2025 Summer Course: S-P course



AEL 2025 Summer Course: K-P course



AEL 2025 Summer Course: A-P course



AEL 2026 Winter Course: Opening Ceremony



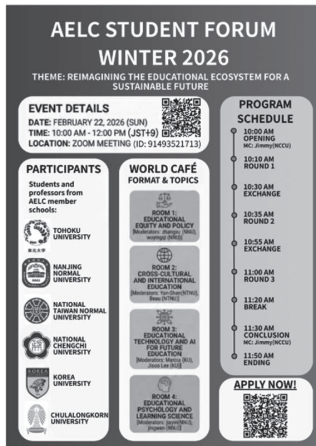
AEL 2026 Winter Course: A-P course



AEL 2026 Winter Course: K-P course



AEL 2026 Winter Course: S-P course



Asia Education Leader Forum Poster Winter 2026

AEL 2025 Summer Course Pre-study Series Poster

SC2025 Timetable

	Subject (2 credits for each)		
	K-P Cluster	A-P Cluster	S-P Cluster
Winter Course 2024	Essentials of Leadership and Group Dynamics	Affective Dimensions of ICT-supported and STEM Education	Emotional and Behavioral Problems in Adolescents
Host:NCCU & NTNU			
Lecturer	Prof. Gregory Ching	Prof. Silvia Wen-Yu Lee, Prof. Jyh-Chong Liang	Prof. Trista Juhsin Fu
Summer Course 2024	Cognitive Science of Human Communication	Reimagining Sustainability, Globalization and Education in the Asia-Pacific Region	Mental Health and Telepsychology
Host:TU			
Lecturer	Prof. Hideki Kozima	Prof. Jing Liu	Prof. Lenna Schlemper
Winter Course 2025	Educational Changes in China	Children's Development in China	Regression Analysis
Host:NNU			
Lecturer	Academic team from NNU	Academic team from NNU	Prof. Chen Chen
Summer course 2025	Transforming Global Education: Integrating Internationalization and Official Development Aid in Education	Comparative Education: Issues from International Large-scale Assessments	Utilization of International Large-scale Assessment Data for Education Research
Host:KU			
Lecturer	Prof. Heeyoung Lee, Prof.Hyojin Lee	Prof. Pey-Yan Liou	Prof. Pey-Yan Liou

WC2026 Timetable

AELC 2026 Winter Timetable

	Monday	Tuesday	Wednesday	Thursday	Friday	Saturday	Sunday	Monday	Tuesday	Wednesday	
	Feb 2	Feb 3	Feb 4	Feb 5	Feb 6	Feb 7	Feb 8	Feb 9	Feb 10	Feb 11	
Cluster	(K-P) Inclusive Education Dr. Hsiao-Lan Sharon Wang			(A-P) Essentials of Leadership and Group Dynamics Dr. Gregory Ching			Break	(S-P) Individual Action in Global Social Change: Global Citizenship Awareness and Youth Solidarity Dr. Chen-Wei Chang			
1st slot 9:30-10:30	Foundations for Inclusion	Universal design (history and principles)	The inclusion toolkit	Reflecting - Life's Up and Down	Opening doors at school and at home	Motivating others		Ice-breaking activities	Lecture on youth solidarity and collective action	Lecture	
2nd slot 10:40-12:10	Foundations for Inclusion	Universal design (benefits and approach)	The inclusion toolkit	Personality - Birds of the same Feather	GenZ Work Value & Learning Styles	Facilitating change		Key theories of global social change and the core principles of Global Citizenship Education (GCE)	Group analysis of youth-led initiatives in participants' own societies	Group work to finalize youth solidarity action plans	
12:10-13:30	Lunch Break										
3rd slot 13:30-14:30	Review and QA	Review and QA	Review and QA	Team building - Tower	Creating Trust	Group presentations		Group discussions and sharing of locally and globally observed social issues	Interactive workshop	Group presentations of proposed actions	
4th slot 14:40-16:00	Watch a film (Including Samuel)	Table game (Cards for inclusion)	Group presentation	Team building - Pyramid	Influencing Others	Group presentations	Group discussions and sharing of locally and globally observed social issues	Group discussions & Planning session to draft youth solidarity action plans	Peer and instructor feedback		
5th slot 16:10-17:00	Discussions and insights sharing	Reflections and thoughts sharing	Group presentation	Team building - Collaborative or Cooperative	Win-Win	Group presentations	Reflective journal writing on the theme "Am I a global citizen?"	Reflective journals focusing on youth agency at local and global levels	Synthesis and visioning session		